

MICHENER INVESTMENTS LLP

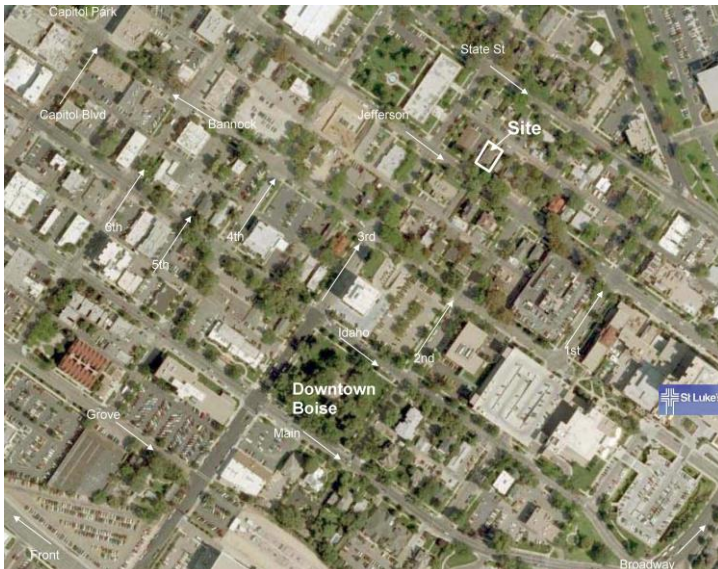
COMMERCIAL REAL ESTATE

DOWNTOWN OFFICE BUILDING FOR LEASE



- Location: **216 W. Jefferson, Boise Idaho 83702**
- Size: **± 2,413 sq. ft. plus basement**
- Zoning: **R-OD (Office use approved by the City of Boise)**
- Lease Rate: **\$3,600/month (\$17.90/sq ft/yr) plus utilities/minor repairs/landscaping**
- Amenities:
- New ADA Restroom and handicapped ramp
 - Five executive offices
 - Large reception/waiting room and work room
 - Geothermal heat
 - Central air conditioning
 - Close to Downtown Boise, courthouse, and St. Luke's
 - Great condition with very efficient, usable floor plan
 - 4 On-site parking spaces with on street parking readily available

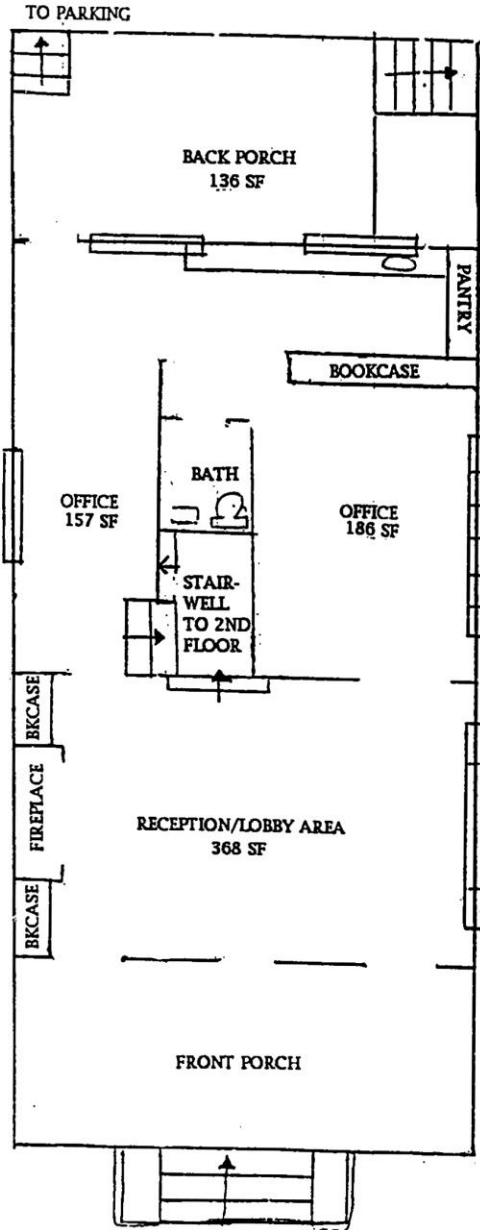
Agent: Lawrence A. Ross (208) 861-9909 lawrence@michenerinvestments.com



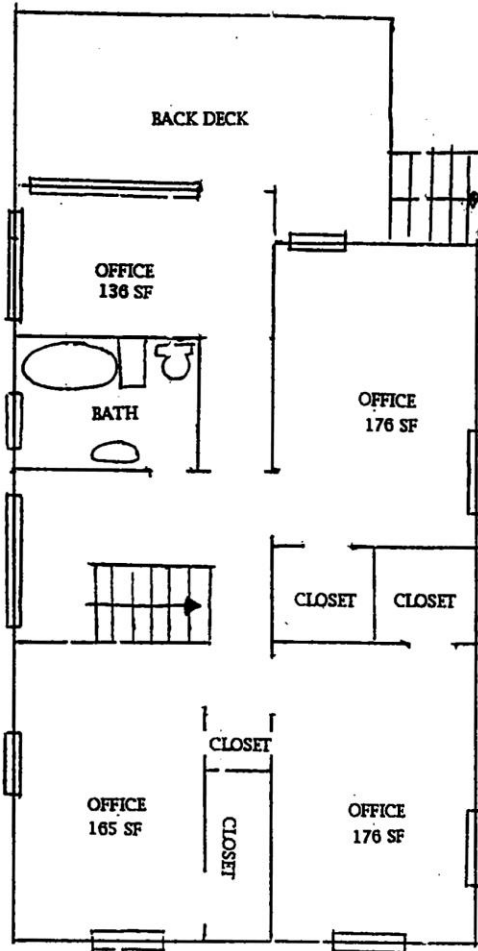
→ Floor Plan

*The above information, while not guaranteed, is from sources we believe to be reliable. This data is subject to price change corrections, errors, omissions, prior sale and/or withdrawal.

1ST FLOOR



2ND FLOOR



BSMT

